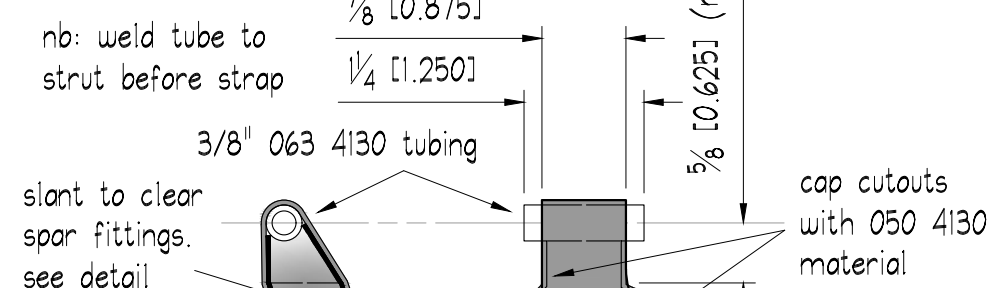
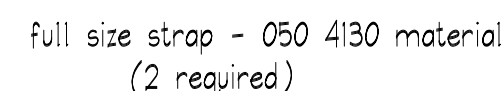


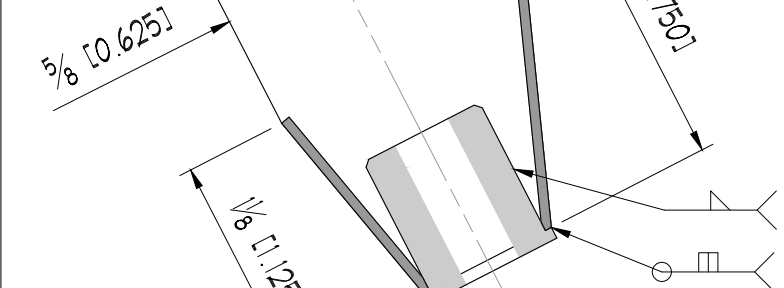
nb: this strap is same size
as rear bottom strut strap



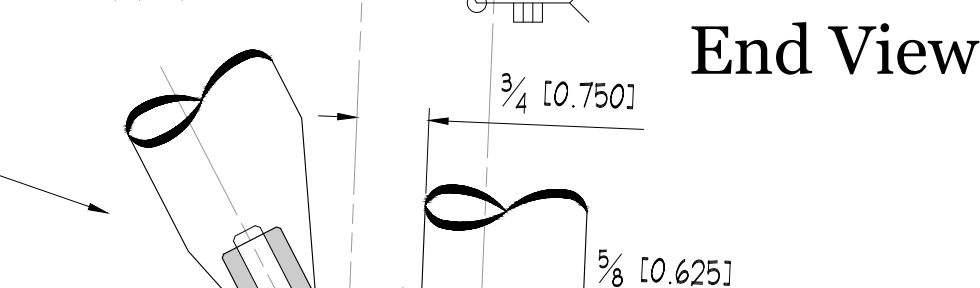
Scale $1/2'' = 1''$



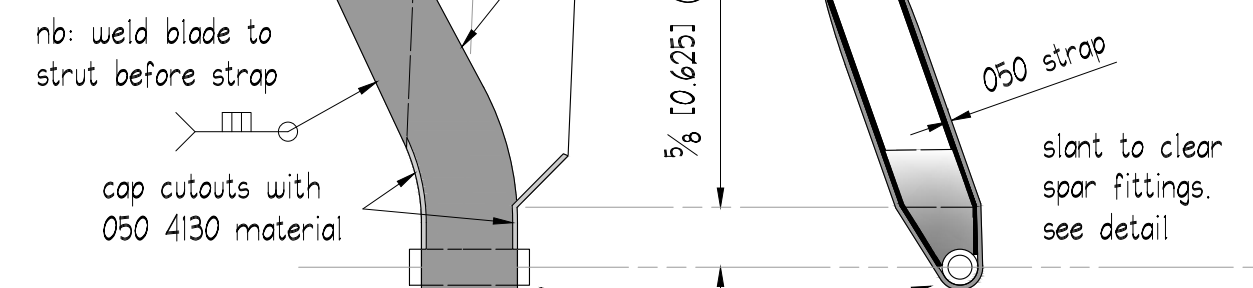
1. cut tube at slant as shown
2. weld bung on inside four sides
3. cap cutouts with 050 4130
4. weld bung around edge



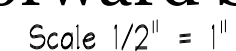
5/16 - 24 TPI threaded bung.
see Wing - Flying/Landing Wire
drawing for details. 2 required.



End View



Side View



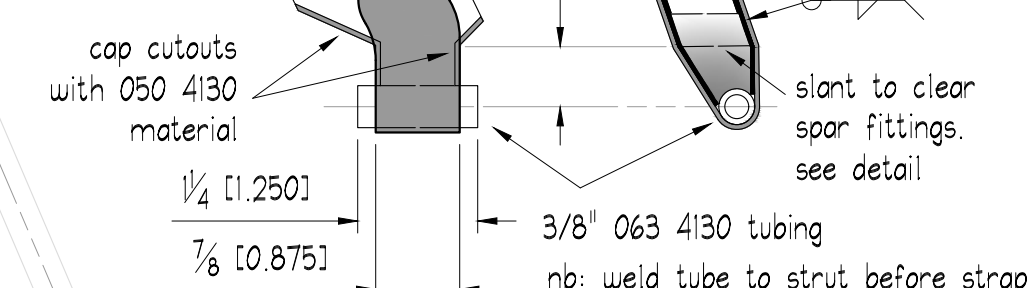
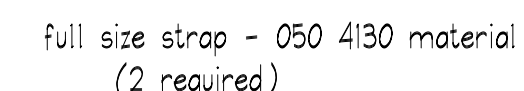
Strut Side View



Scale $1/2'' = 1'$



End View



Scale $1/2'' = 1''$

nb: this strap is same size
as forward top strut strap

full size strap - 050 4130 material
(2 required)



Assembly: Wing Structure

Assembly Subsection: Scale: $1/4'' = 1''$

Interplane Struts

Drawn by: MAJM Date: oct.2019
File No: 4E83F3F7-1713-4425-A86B-50DAABF1E22B

Sheet Number:

16